



# Problem J

## Skiing

Time Limit: 2 seconds

As you know, the ACM ICPC is not the only major sporting event taking place in Russia this year. Several months ago, the 2014 Winter Olympics were held in Sochi, which is about 3 000 km from Ekaterinburg.

In an increasing number of sports, it is not only the ability of the athletes that determines who wins a competition but also their equipment. For example in downhill skiing, having the latest ski technology enables athletes to increase their speeds and improve their turning ability.

You have been hired to determine the effect of the latest ski technology on the ability of skiers to navigate a downhill course. The course contains several target locations, and the skier wants to pass over as many of them as possible. Naturally, the better the ski technology, the easier it will be to do this.

For simplicity, use a two-dimensional coordinate system where the skier starts at position  $(0,0)$  and where “downhill” corresponds to the direction of the positive  $y$ -axis.

Assume the  $y$ -component of the athlete’s velocity is a constant  $v_y$ . The athlete can change speed laterally (in the  $x$ -direction), but the skiing equipment limits this to a maximal lateral acceleration  $a_{max}$ . The skier starts with a lateral velocity of 0.

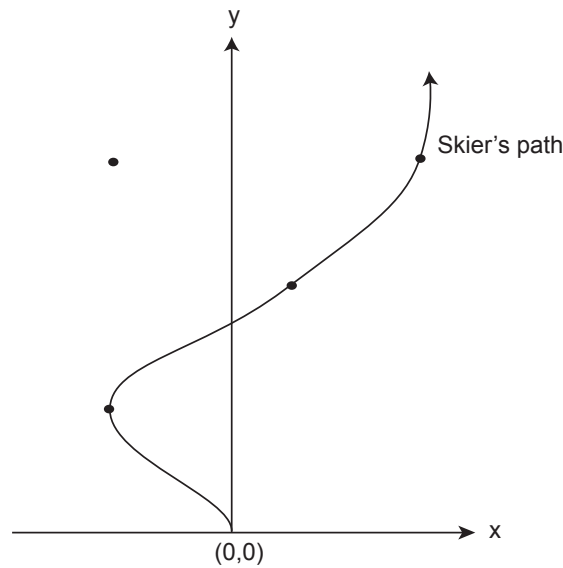


Figure J.1: Downhill ski path passing over three targets

In Figure J.1 (which corresponds to the first sample input), the optimal path passes over three out of four possible targets. If  $a_{max}$  were smaller, then the skier might be able to pass over only two or fewer of the targets.



## Input

The input contains a single test case. The first line contains three integers  $n$ ,  $v_y$ , and  $a_{max}$  ( $0 \leq n \leq 250$ ,  $0 \leq v_y \leq 10^5$  and  $0 \leq a_{max} \leq 10^7$ ), where  $n$  is the number of targets,  $v_y$  is the  $y$ -component of the skier's velocity, and  $a_{max}$  is the maximum lateral acceleration. Here  $v_y$  is given in meters per hour and  $a_{max}$  in meters per hour squared.

Following this are  $n$  lines, each containing two integers  $x_i$  and  $y_i$  ( $-10^5 \leq x_i, y_i \leq 10^5$ ). These give the coordinates of each target to be visited on the course. All coordinates are given in meters. Targets are numbered 1, 2, ...,  $n$  in the order they are given.

## Output

Display the maximal-length sequence of targets that the athlete could pass over on the course in a single run. Display the targets in the order they are visited. If there are multiple maximal-length sequences, display only the lexicographically first one. (So the sequence 2 15 would come before the sequence 10 15.) If the athlete cannot pass over any targets, print `Cannot visit any targets` instead.

To ensure floating-point stability, you may assume the answer will not change if  $a_{max}$  is perturbed by up to 0.1.

### Sample Input 1

```
4 100 400
-100 100
50 200
-100 300
150 300
```

### Sample Output 1

```
1 2 4
```

### Sample Input 2

```
1 100 100
1000 10
```

### Sample Output 2

```
Cannot visit any targets
```